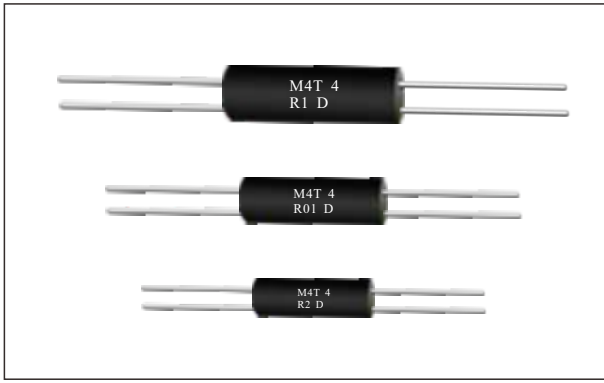


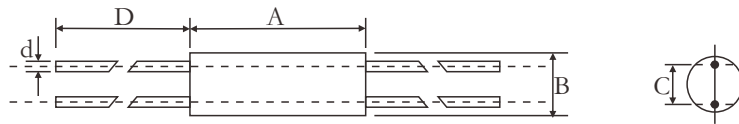
M4T 四端线绕电阻



Features

- Molded four-terminal resistor for specialized applications
- Extremely low resistance values for current sensing applications
- Precision resistance tolerance
- Low temperature coefficients
- Complete welded construction

Dimensions, Power



Type	Rated Power (W)	Dimensions (mm)				
		A ± 0.25	B ± 0.25	C ± 0.25	D ± 1.0	d ± 0.02
M4T-1	1	16.5	6.35	3.2	25	0.8
M4T-2	2	20.3	7.62	3.2	25	0.8
M4T-4	4	22.8	8.6	3.2	25	1.0
M4T-5	5	47.5	11.1	3.2	25	1.0

Ordering Information

Example:

M4T-1	1	F	R01	C
(1)	(2)	(3)	(4)	(5)
Series Name	Power Rating	Resistance Tolerance	Resistance Value	TCR

(1)Type: M4T-1 SERIES

(2)Power Rating: 1=1W、2=2W、4=4W、5=5W

(3)Tolerance: F= ± 1%、G= ± 2%、H= ± 3%、J= ± 5%、K= ± 10%

(4)Resistance Value:R10=0.01Ω、R003=0.003Ω

(5)TCR: ± 50ppm/°C or ± 100ppm/°C

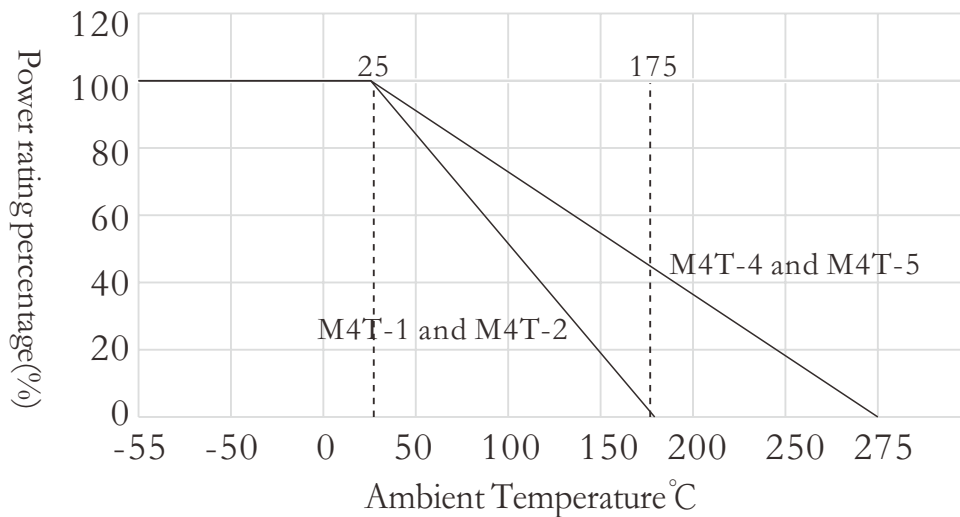
Reference Standards

IEC 60115-1

Applications And Ratings

Type	Power Rating P25°C (W)	Resistance Range(Ω)	Tolerance	TCR (PPM/°C)
M4T-1	1	0.001 to 0.060	D ± 0.5% F ± 1% G ± 2%	± 50 ± 100
M4T-2	2	0.001 to 0.060		
M4T-4	4	0.001 to 0.200		
M4T-5	5	0.010 to 0.500		

Derating Curve



Performance Characteristics

PARAMETER	UNIT	Performance Requirements
Temperature Coefficient	ppm/°C	±50, ±100(-10°C to +80°C)
Dielectric Withstanding Voltage	V _{AC}	1000
Short Time Overload	-	5x power for 5s, limited to 25A maximum
Maximum Working Voltage	V	$(P \times R)^{1/2}$ or $\sqrt{P \times R}$
Insulation Resistance	Ω	10000MΩ minimum
Operating Temperature Range	°C	M4T-1 and M4T-2=-55 to +175, M4T-4 and M4T-5=-55 to +275