



产品特点 Features

- I 高强度外壳
- II 强度高，耐震性好
- III 两种不同功率的电阻合为一体。

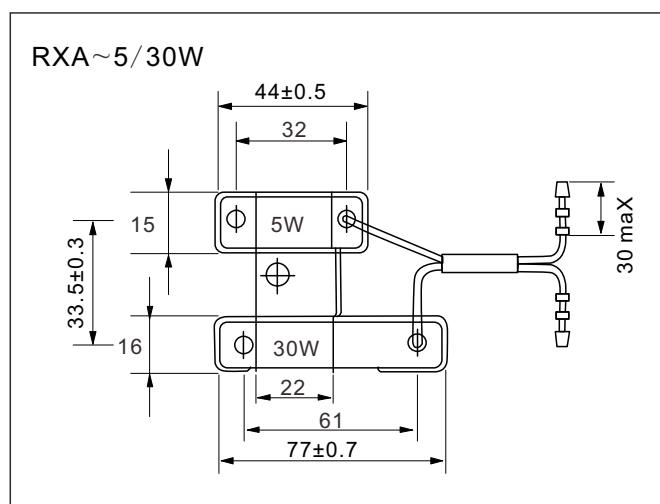
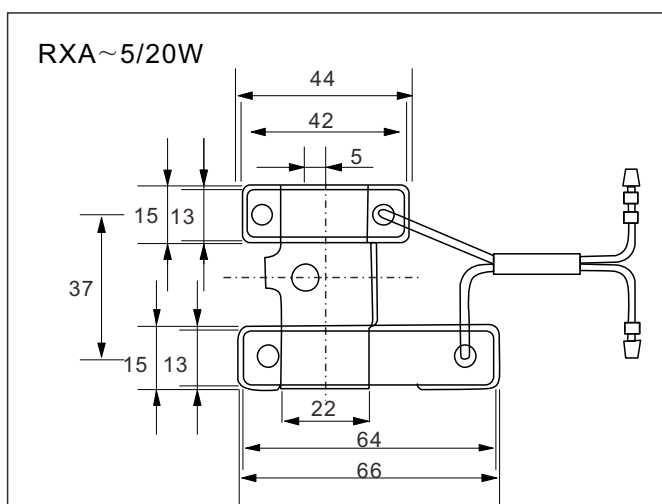
- I High-strength case
- II Good ability of shock-proof
- III Two different power of resistors combined in one case

应用 Applications

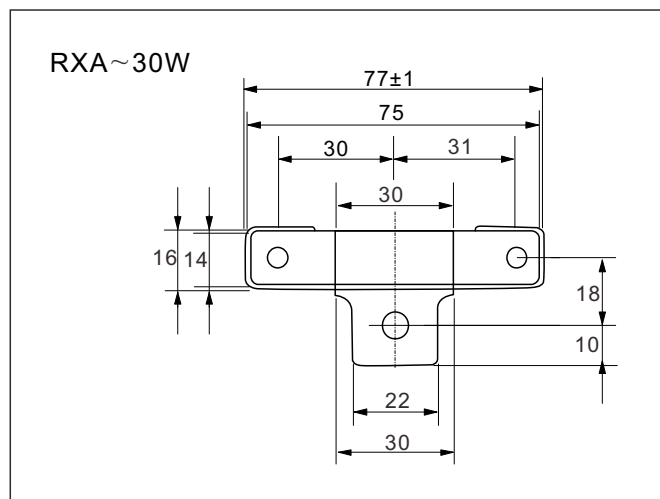
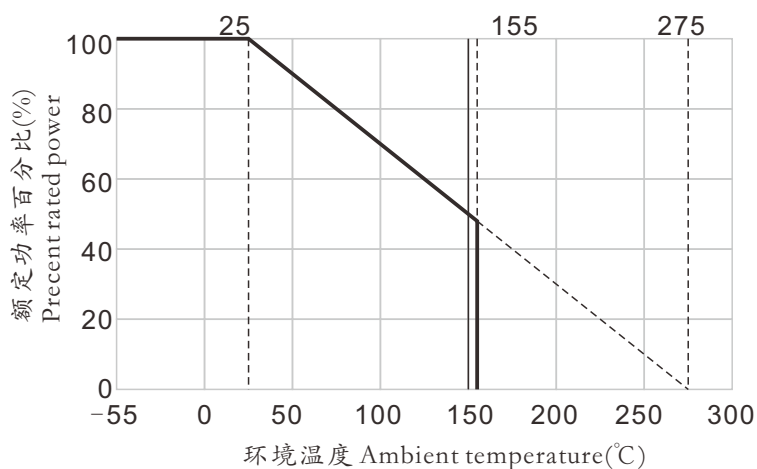
用于摩托车大灯,泄放电路

Big size lamps of motorcycle, Release circuit

结构图 Construction(mm)



降功耗曲线 Derating Curve



参考规格 Reference Standards

JISC-5201-1 , Q/ATK027-2002

● 功率、阻值与耐电压 Power、Resistance And Etc.

型号 Type	额定功率 Rated power	阻值范围Resistance range		精度 Tolerance	温度系数 TCR (PPM/°C)	绝缘电压 Insulation voltage
		最小值Min	最大值Max			
RXA~5W	5W	1Ω	3.6KΩ	±5% ±10%	±250	700V
RXA~20W	20W	4.7Ω	4.7KΩ			
RXA~5W/20W	5W,20W	1Ω, 4.7Ω	3.6KΩ,4.7KΩ			
RXA~20W/20W	20W,20W	4.7Ω, 4.7Ω	4.7KΩ,4.7KΩ			
RXA~30W	30W	5.1Ω	5.1KΩ			
RXA~5W/30W	5W,30W	1Ω, 5.1Ω	3.6KΩ,5.1KΩ			
RXA~30W/30W	30W,30W	4.1Ω, 4.1Ω	5.1KΩ,5.1KΩ			

● 性能 Performance

试验项目 Test item	性能要求 Specifications	试验方法 Test method(JISC-5201-1)
长期试验 Long load life	$\Delta R \leq (3\%R + 0.05\Omega)$	70°C, 1.5PR200h
稳态湿热 Damp heat, steady state	$\Delta R \leq (5\%R + 0.05\Omega)$	40°C, RH93±3%, 21d
引出端强度 Terminal tensile strength	$\Delta R \leq \pm(13\% + 0.05\Omega)$	10N, 10S

● 料号编号 Ordering Information

例 Example

RXA	5W	5R100	K	±250PPM
产品型号 Type	功率 Power	标称阻值 Nominal value	精度 Tolerance	温度系数 TCR
RXA	5W 20W 30W	5R10=5.1Ω 1R00=1Ω 100R0100Ω	K=±10%	±250PPM/°C